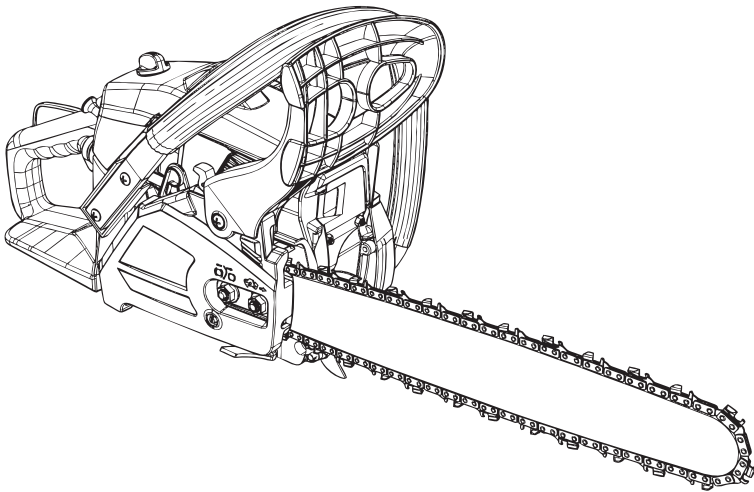




Petrol Chain Saw

41 cm³



Original Instructions_MNL_FPCSP41-3_GB_V2_220301

FPCSP41-3

EAN: 5059340255828

BX220IM



WARNING: Read the instructions before using the product!

Let's get started...

These instructions are for your safety. Please read through them thoroughly before use and retain them for future reference.



Getting **started...** 02

Safety information	03
Your product	19
Before you start	22



In more **detail...** 34

Product functions	34
Operation	40
Care and maintenance	47
Troubleshooting	56
Recycling and disposal	58
Guarantee	59
Technical specifications	61
EC declaration of conformity	62

Safety warnings

Petrol powered chain saw safety warnings



IMPORTANT Read carefully before use.
Keep for future reference.



WARNING! Your safety and the safety of others is very important. Of course, it is not practical or possible to warn you about all the hazards associated with operating or maintaining this product. At all times you must use your own good judgment.

1. This product is not intended for use by persons (including children) with reduced physical, sensory or mental capabilities, or lack of experience and knowledge, unless they have been given supervision or instruction concerning use of the product by a person responsible for their safety;
2. Children should be supervised to ensure that they do not play with the product.

General warning

1. This product is dangerous if used carelessly or incorrectly and can cause serious or even fatal injuries.
2. Read all instructions carefully. When using petrol powered products, always follow stated safety precautions to reduce the risk of serious personal injury and/or damage to the product.
3. The product should only be operated by those who have read and understood all safety and operating instructions in this manual.

Getting started...

Safety warnings

4. Keep your work area free from pets, animals, children and bystanders.
5. Follow instructions for lubricating, chain tensioning and changing accessories. Improperly tensioned or lubricated chain may either break or increase the chance for kickback. It may cause the chain to snap, which could lead to serious or even fatal injuries.
6. Running this product in a confined or badly ventilated area can result in death due to asphyxiation or carbon monoxide poisoning. The product is for outdoor use only.
7. Take extreme care in wet and freezing weather conditions. Do not work in rain, windy or stormy weather.
8. Do wear a face and breathing mask. The use of this product can generate dust, mists and fumes containing chemicals known to cause respiratory damage.
9. Do use safety steel toe capped footwear, sturdy cut retardant snug-fitting protective clothing, protective gloves, eye, hearing and head protection devices.
10. Do always visually check the product before use.
11. Do not attempt to tackle any job that you are not adequately trained for.
12. Do not allow other persons to be near when starting or cutting with the product.
13. Keep bystanders and animals at least 15 metres (50') out of the work area.
14. Do not operate the product if it has faulty safety equipment or damaged parts!
15. Do not under any circumstances modify the product. Modifications can result in serious personal injury or death.

16. Do not start cutting until you have a clear work area, secure footing, and a planned retreat path from the falling tree.
17. All product servicing & maintenance, other than the items listed in the user manual, safety and maintenance instructions, should be performed by an authorised service centre.
18. A first time user should have practical instruction in the use of the product and protective equipment from an experienced operator.
19. National regulation can restrict the use of the product.

Clothing and protective equipment

1. Do secure long hair so that it is above shoulder level.
2. Do not wear loose fitting clothing or jewellery as this could be drawn into the motor, catch the chain or undergrowth.
3. Use the following safety clothing and protective equipment when operating the product:
 - Helmet with visor and neck guard (compliant to EN 397)
 - Hearing protectors
 - Breathing mask
 - Gloves with approved saw protection (compliant to EN 381-4, EN 381-7, EN 420:1, EN 388 Class 3)
 - Protective leggings with approved saw protection (compliant to EN 381-5, EN 340 Class 1)
 - Steel toe cap boots with approved saw protection (compliant to EN ISO 20345 Class 2)
 - First aid kit in case of injury.

Safety warnings

Fuel handling

1. Before refuelling, stop the engine, disconnect the spark plug connector and let the product cool. Fuel and fuel vapours are highly flammable. Take care when handling fuel. Never smoke when you are refuelling the product. Do not refuel the product, if there is an open fire in the vicinity!
2. Always use suitable aids such as funnels and filler necks. Do not spill any fuel on the product or its exhaust system. There is a risk of ignition. However, if fuel should be spilled, then you must remove it carefully from all parts of the product. Any residue which may be present must be completely removed, before the product is operated!
3. Never refuel indoors. Exhaust gases and fuel fumes are noxious.
4. Never use the product in environments where there is a risk of explosion. Fuel fumes can ignite.
5. Never breathe in any fuel fumes, when you are refuelling the product. Never fill the tank in enclosed spaces, such as basements or sheds. There is a risk of poisoning and explosion!
6. Avoid skin contact with petrol.
7. Do not eat or drink, while you are refuelling the product. If you have swallowed petrol or oil, or if petrol or oil has got into your eyes, then seek medical advice immediately.
8. Close the fuel tank cap immediately after filling the fuel tank. Make sure that it is properly closed.
9. Never use the product without an air filter.

10. Fuel vapour pressure may build up inside the fuel tank depending on the fuel used, weather conditions and the tank venting system. To reduce the risk of burns and other personal injuries, remove the fuel cap carefully to allow any pressure build up to release slowly.
11. Be aware of fire risks, explosion and inhalation risks.
12. Do not smoke while operating the product, handling fuel or near fuel.
13. Ensure the spark plug lead is secured; a loose lead may cause electrical arcing that could ignite combustible fumes and cause a fire or explosion.
14. Check regularly for leaks from the fuel cap and fuel lines.
15. Do use caution when handling fuel. To avoid any accidental fires, move the product at least 3 metres (10') from the fuelling point before starting the engine.
16. Tighten the fuel tank cap thoroughly after refilling the fuel tank.
17. Do not operate the product if it is leaking fuel. Do not remove the fuel tank cap while the engine is running.
18. Use only an approved container for this purpose.
19. Do not store cans of fuel or refill the fuel tank in any place where there is a boiler, stove, wood fire, electrical sparks, welding sparks, or other sources of heat or fire which might ignite the fuel.
20. If any fuel spillage occurs during refuelling, use a dry rag to wipe up spills and allow remaining fuel to evaporate before turning the engine on again.
21. If you have spilt fuel on yourself or on your clothes, change your clothes and wash any part of your body that has come in contact with fuel before turning the engine on again.
22. If fuel is ignited, put out the fire with a dry powder fire extinguisher.

Safety warnings

23. If the fuel tank is drained, this should be done outdoors.

Getting started

1. Do not operate the product indoors, it produces poisonous exhaust fumes whilst the engine is running and may be colourless and odourless.
2. Do not wrap the recoil starter rope around your hand whilst starting the product. This may result in injuries to your hand or fingers.
3. Do keep handles dry, clean, and free from oil and grease. Greasy, oily handles are slippery causing loss of control.
4. Do not operate the product with a slack chain. A slack chain may jump off the guide bar and cause serious or even fatal injury.
5. Do not operate the product with one hand! Serious injury to the operator or bystanders may result from one handed operation.
6. Keep all parts of the body away from the saw chain when the chain saw is operating. Before you start the chain saw, make sure the saw chain is not contacting anything and free from obstructions. A moment of inattention while operating chain saws may cause entanglement of your clothing or body with the saw chain.
7. Do shut off the engine before setting the product down.
8. Before using the product and after any impact or dropping, check for signs of wear or damage and repair as necessary.

Operation

1. When sawing, ensure the product does not touch any foreign materials such as rocks, fences, nails etc. Such objects may be flung out and could result in damage to the product or serious personal injury or even death.
2. Never operate the product on a ladder or other insecure support.
3. If the chain jams in the cut: STOP THE ENGINE. Do not try to pull the product free. Use a lever to open the cut and free the chain. Failure to do so could result in serious injuries or death.
4. Do only cut with the engine at high speeds.
5. Do use extreme caution when cutting small size bushes and saplings. Slender material may catch the saw chain and whip toward you or put you off balance.
6. Do operate the product only in well ventilated areas.
7. Do not operate the product with one hand! This product is intended for two handed use only, with your right hand on the rear handle and your left hand on the front handle. You cannot control reactive forces and you may lose control of the saw, which can result in the skating or bouncing of the bar and chain along the limb or log.
8. Do not operate the product if you are tired.
9. Do not operate the product if you have any medical conditions that might be aggravated by strenuous work. Check with your doctor before operating this product.
10. Do not operate the product when ill or under the influence of drugs, alcohol or medication.
11. Do not touch the exhaust during use - IT GETS VERY HOT.

Safety warnings

12. Do not operate a product that is damaged, improperly adjusted, or not completely and securely assembled. Be sure that the saw chain stops moving when the throttle trigger is released.
13. Do not operate this product in a tree unless you have been specifically trained to do so. Operation of the product while up in a tree may result in personal injury.
14. Do not operate your product near or around flammable liquids or gases.
15. Do not smoke whilst operating the product.
16. Do not lock the product over fixed stands.
17. Do not grip the handles with constant or excessive pressure; this will increase the feeling of vibration and the risk of 'whitefinger' disease.
18. Do not over reach when operating the product or cut above shoulder height.
19. Do not operate the product if it is leaking fuel or chain oil.
20. When cutting a limb (branch) that is under tension, be alert for spring back so that you will not be struck when the tension in the wood fibres is released.
21. Always keep proper footing and operate the chain saw only when standing on fixed, secure and level surface. Slippery or unstable surfaces such as ladders may cause a loss of balance or control of the chain saw.
22. Cut wood only. Do not use the product for purposes not intended. For example: do not use chain saw for cutting plastic, masonry or non-wood building materials. Use of the chain saw for operations different than intended could result in a hazardous situation.

Transport and storage

1. Do ensure the engine is off and engage the chain brake before transporting the product.
2. Do carry the product with the engine stopped, the guide bar and saw chain to the rear, and the exhaust away from your body.
3. Do use the guide bar cover and ensure that is fitted to the product during transportation or storage.
4. Only carry the product in a horizontal position. Grip the front handle in a manner that the product is balanced horizontally.
5. Keep the hot exhaust away from your body and the saw chain behind you.
6. Correctly secure your product when transporting in a vehicle to prevent turnover, fuel spillage and damage to the product.
7. Always store the product and fuel so that there is no risk of leakages or fumes coming into contact with sparks or naked flames from electrical equipment, electric motors, relays/switches, boilers etc.
8. For longer periods of storage or transportation the fuel and chain oil tanks must be emptied. Dispose of waste oil and fuel at a local petrol station, local authority centre or where facilities exist.
9. Do store fuel in an approved container designed for that purpose.
10. Do ensure that the product is cleaned and that a complete service is conducted before any long-term storage.

Causes and operator prevention of kickback

Kickback may occur when the nose or tip of the guide bar touches an object, or when the wood closes in and pinches the saw chain in the cut.

Safety warnings

Tip contact in some cases may cause a sudden reverse reaction, kicking the guide bar up and back towards the operator.

Pinching the saw chain along the top of the guide bar may push the guide bar rapidly back towards the operator.

Either of these reactions may cause you to lose control of the saw which could result in serious personal injury. Do not rely exclusively upon the safety devices built into your saw. As a product user, you should take several steps to keep your cutting jobs free from accident or injury.

Kickback is the result of tool misuse and/or incorrect operating procedures or conditions and can be avoided by taking proper precautions as given below:

1. **Maintain a firm grip, with thumbs and fingers encircling the product handles, with both hands on the saw and position your body and arm to allow you to resist kickback forces.** *Kickback forces can be controlled by the operator, if proper precautions are taken. Do not let go of the product.*
2. **Do not overreach.** *This helps prevent unintended tip contact and enables better control of the product in unexpected situations.*
3. **Only use replacement bars and chains specified by the manufacturer.** *Incorrect replacement bars and chains may cause chain breakage and/or kickback.*
4. **Follow the manufacturer's sharpening and maintenance instructions for the saw chain.** *Decreasing the depth gauge height can lead to increased kickback.*

Vibration and noise reduction

To reduce the impact of noise and vibration emission, limit the time of operation, use low-vibration and low-noise operating modes as well as wear personal protective equipment.

Take the following points into account to minimize the vibration and noise exposure risks:

1. Only use the product as intended by its design and these instructions.
2. Ensure that the product is in good condition and well maintained.
3. Use correct attachments for the product and ensure they are in good condition.
4. Keep tight grip on the handles/gripping surface.
5. Maintain this product in accordance with these instructions and keep it well lubricated (where appropriate).
6. Plan your work schedule to spread any high vibration tool use across a longer period of time.
7. Prolonged use of the product exposes the user to vibrations that can cause a range of conditions collectively known as hand-arm vibration syndrome (HAVS) e.g. fingers going white; as well as specific diseases such as carpal tunnel syndrome.
 - To reduce this risk when using the product, always wear protective gloves and keep your hands warm.
 - The symptoms of HAVS include any combination of the following: Tingling and numbness in the fingers; Not being able to feel things properly; Loss of strength in the hands; Fingers going white (blanching) and becoming red and painful on recovery (particularly in the cold and wet, and probably only in the tips at first). Seek medical advice immediately if such symptoms are experienced.

Safety warnings

The European Physical Agents (Vibration) Directive has been brought in to help reduce hand arm vibration syndrome injuries to users of product's with vibration emission. The directive requires manufacturers and suppliers to provide indicative vibration test results to enable users to make informed decisions as to the period of time a product can be used safely on a daily basis and the choice of tool. Further advice can be found at www.hse.gov.uk.

Emergency

Familiarise yourself with the use of this product by means of this instruction manual. Memorise the safety directions and follow them to the letter. This will help to prevent risks and hazards.

1. **Always be alert when using this product, so that you can recognize and handle risks early.** Fast intervention can prevent serious injury and damage to property.
2. **Stop the engine and disconnect the spark plug connector if there are malfunctions.** Have the product checked by a qualified professional and repaired, if necessary, before you operate it again.
3. **In case of fire stop the engine and disconnect the spark plug connector.** Take fire-extinguishing measures immediately if the product switch is no longer accessible.



WARNING! Never use water to extinguish a product on fire. Burning fuel must be extinguished with special extinguishing agents! We recommend that you keep a suitable fire extinguisher within reach in your work area!

Residual risks

Even if you are operating this product in accordance with all the safety requirements, potential risks of injury and damage remain. The following dangers can arise in connection with the structure and design of this product:

1. Health defects resulting from vibration emission if the product is being used over long periods of time or not adequately managed and properly maintained.
2. Injuries and damage to property due to broken application tools or the sudden impact of hidden objects during use.
3. Danger of injury and property damage caused by flying objects.
4. Burns, if touching hot surfaces.



WARNING! This product produces an electromagnetic field during operation! This field may under some circumstances interfere with active or passive medical implants! To reduce the risk of serious or fatal injury, we recommend persons with medical implants to consult their doctor and the medical implant manufacturer before operating this product!

Symbols

On the product, the rating label and within these instructions you will find among others the following symbols and abbreviations. Familiarise yourself with them to reduce hazards like personal injuries and damage to property.

Symbols

kW	Kilowatt	cm ³	Cubic centimetre
/min or min ⁻¹	Per minute	mm	Millimetre
kg	Kilogram	g/kWh	Gram per kilowatt per hour
mL	Millilitre	L	Litre
dB(A)	Decibel (A-rated)	m/s ²	Metres per seconds squared
yyWxx	Manufacturing date code; year of manufacturing (20yy) and week of manufacturing (Wxx)		



Lock / to tighten or secure.



Unlock / to loosen.



CAUTION!
WARNING!
DANGER!



CAUTION / WARNING!
Read the instruction manual.



NOTE:



Wear a helmet, safety goggles and hearing protection.



Wear respiratory protection.



Wear protective gloves.



Wear protective, slip-resistant footwear.



Wear tight-fitted protective clothes.



Use appropriate protection for foot-leg and hand-arm.



Do not expose the product to rain or wet conditions.



Open flames in the work area, around the product and in the vicinity of flammable materials are prohibited!



Do not smoke in the work area, around the product and in the vicinity of flammable materials!



Risk of fire / flammable materials



Hot surface, do not touch! High temperatures on the product's surfaces and structural parts that could cause burns, if they are touched. The product can also stay hot for a longer period of time after operation!





This product produces noxious exhaust fumes. If the product is used improperly, these fumes can lead to poisoning, a loss of consciousness or death!



Noxious exhaust fumes; do not operate or start the product in indoor rooms!



Stop the engine and disconnect the spark plug connector before assembly, cleaning, adjustments, maintenance, storage and transportation.



Choke – CLOSE position



Choke – OPEN position



H - Set the max. engine speed
L - Set the min. engine speed



Engine start by pulling recoil starter.



Correct direction of cutting-teeth



Chain brake disengaged/ engaged; location: on right side cover.



Refill chain oil here; location: Chain oil tank cap.



Indication of chain oil adjuster screw; location: bottom.



Kickback! Tip contact may cause the guide bar to move suddenly upward and backwards what may cause serious injury to user.



Contact of the guide bar tip with any object should be avoided.



Always use the product with two hands. Do not use one hand when operating the product.



Objects thrown by the product could hit the user or other bystanders. Always ensure that other people and pets remain at a safe distance from the product when it is in operation. In general, children must not come near the area where the product is.



Symbols



Keep a distance of at least 10 m.



40:1



Only use petrol/oil mixture with a ratio of 40:1. Do not use any other mixture ratio. Always switch the product off and let it cool down, before refuelling it.



Press the primer before starting the cold engine.



Cutting device continues to rotate after the product is switched off. Wait until all machine components have completely stopped before touching the product.



Guaranteed sound power level value in 114 dB.



WEEE symbol. Waste electrical products should not be disposed of with household waste. Please recycle where facilities exist. Check with your Local Authority or local store for recycling advice.



Crossed out dust bin. Batteries and battery packs should not be disposed of with household waste. Please recycle where facilities exist. Check with your Local Authority or local store for recycling advice.



The product complies with the applicable European directives and an evaluation method of conformity for these directives was done. UK Conformity Assessed.

Rating label explanation

Petrol chain saw: FPCSP41-3 = MODEL NUMBER

FP = Brand name

CS = Chain saw

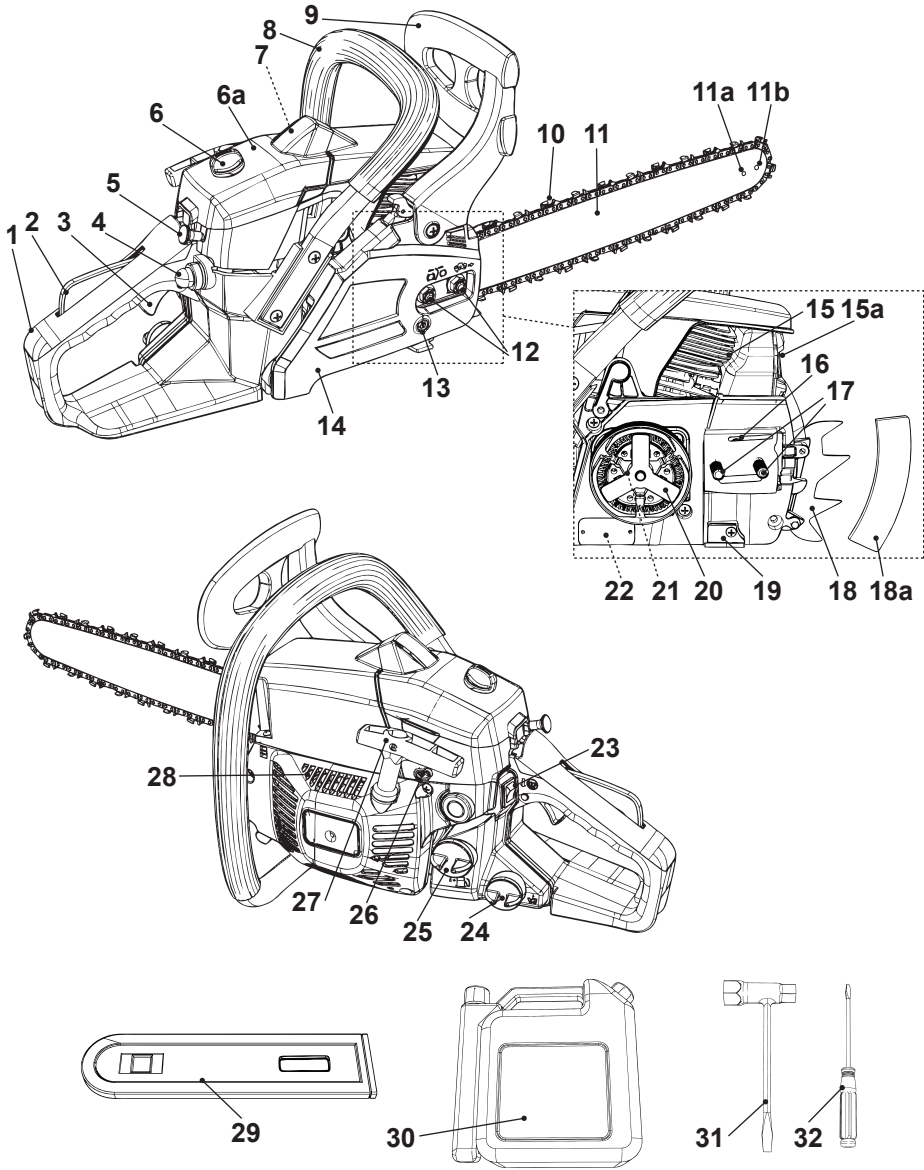
P = Petrol

41 = Engine displacement (cm³)

3 = Version



Your product



Getting started...

Your product

- | | | |
|---|------------------------|--------------------------------------|
| 1. Rear handle | 11. Guide bar | 21. Drive sprocket* |
| 2. Throttle interlock | a. Lubrication hole | 22. Chain oil flow adjustment screw* |
| 3. Throttle trigger | b. Sprocket wheel | 23. Ignition switch (on/off) |
| 4. Primer | c. Tension hole* | 24. Chain oil tank cap |
| 5. Choke lever | 12. Retaining nut (x2) | 25. Fuel tank cap |
| 6. Fixing screw | 13. Tension screw | 26. Engine speed adjustment screw |
| a. Air filter cover | a. Tension pin* | 27. Recoil starter handle |
| b. Air filter* | 14. Cover | 28. Air vents |
| c. Rubber sealing* | 15. Cylinder fins | 29. Guide bar cover |
| 7. Spark plug connector* | a. Muffler | 30. Fuel mixing bottle |
| a. Spark plug* | 16. Oiling port | 31. Multi-tool |
| 8. Front handle | 17. Bolt (x2) | 32. Screwdriver |
| 9. Front hand guard (chain brake lever) | 18. Spiked bumper | |
| | a. Protective cap | |
| 10. Saw chain | 19. Chain catch | |
| | 20. Clutch | |



NOTE: Parts marked with * are not shown in this overview. Please refer to the respective section in the instruction manual.

Unpacking

1. Unpack all parts and lay them on a flat, stable surface.
2. Remove all packing materials and shipping devices, if applicable.
3. Make sure the delivery contents are complete and free of any damage. If you find that parts are missing or show damage do not use the product but contact your dealer. Using an incomplete or damaged product represents a hazard to people and property.
4. Ensure that you have all the accessories and tools needed for assembly and operation. This also includes suitable personal protective equipment.



WARNING! The product and the packaging are not children's toys! Children must not play with plastic bags, sheets and small parts! There is a danger of choking and suffocation!

You will need

(items not supplied)

Petrol
 Engine oil
 Fuel funnel with filter
 Saw chain oil
 Grease for sprocket wheel
 Nose lubrication
 Chain file

(items supplied)

Guide bar cover (29)
 Fuel mixing bottle (30)
 Multi-tool (31)
 Screwdriver (32)

Assembly



WARNING! The product must be fully assembled before operation! Do not use a product that is only partly assembled or assembled with damaged parts!

Follow the assembly instructions step-by-step and use the pictures provided as a visual guide to easily assemble the product!
 Disconnect the spark plug connector (7) from the spark plug (7a)!
 Reconnect it after assembly.



NOTE: Take care of small parts that are removed during assembly or when making adjustments. Keep them secure to avoid loss.

Assembly

Chain and guide bar

Assemble the guide bar (11) and saw chain (10) before operation.

Use only the guide bar (11) and saw chain (10) according to the technical parameter of this product.



WARNING! Always use a saw chain designed as “low-kickback” or a saw chain which meets the low-kickback requirements! A standard saw chain (a chain which does not have the kickback reducing guard links) should only be used by an experienced professional operator. Nevertheless, a low-kickback saw chain does not completely eliminate kickback! A low-kickback or “safety” chain should never be regarded as complete protection against injury! Therefore always use a low-kickback saw chain in conjunction with other kickback protection devices such as the front hand guard!

1. Place the product on a suitable flat surface.
2. Loosen the retaining nuts (12) with the multi-tool (31) and remove them (Fig. 1).
3. Place the slot of the guide bar (11) over the bolts (17). Ensure to fit the guide bar (11) with the saw chain ‘cutter’ symbol at the top of the bar (Fig. 2).

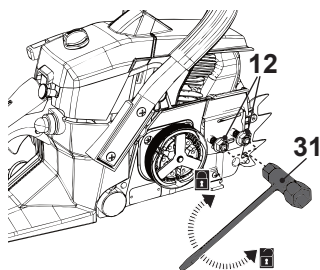


Fig. 1

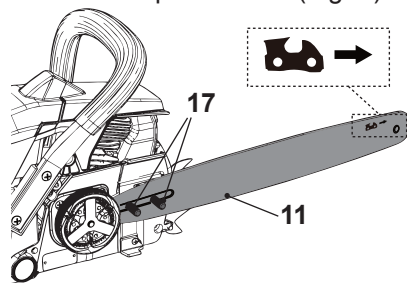


Fig. 2

4. Push the guide bar (11) to the left towards the guide sprocket (21) (behind the clutch (20)) (Fig. 3).

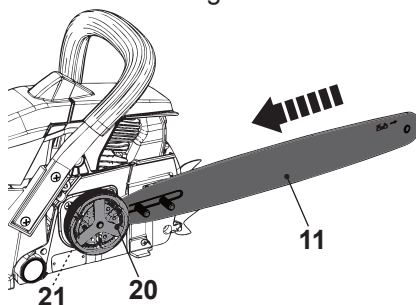


Fig. 3



WARNING! The direction of the saw chain 'cutters' must be as indicated by the symbol and arrow on the guide bar (11)!

5. Place the saw chain (10) over the drive sprocket (21) (behind the clutch (20)) and fit around the guide bar (11). Make sure the saw chain (10) is placed above the chain catcher (19) (Fig. 4).
6. The saw chain movement is as indicated by the arrow (Fig. 5). Make sure the saw chain (10) is properly placed over the sprocket wheel (11b) of the guide bar (11).
7. Pull the guide bar (11) carefully towards the right to tighten the saw chain (10) (Fig. 5).

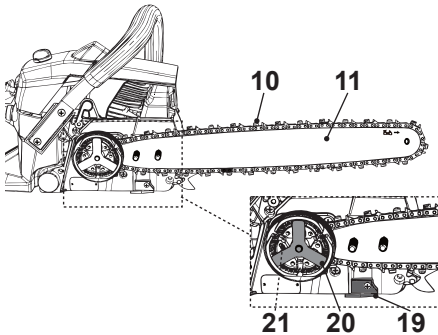


Fig. 4

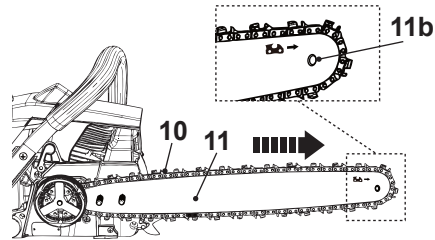


Fig. 5



WARNING! Pull the front hand guard (9) fully backward to keep the chain brake disengaged before fitting the cover (14).

8. Fit the cover (14). If necessary, turn the tension screw (13) clockwise or anticlockwise with the multi-tool (31) to adjust the tension pin (13a) until it reaches a position where it can be inserted into the tension hole (11c) (Fig. 6).
9. Secure the cover (14) with the retaining nuts (12) (Fig. 7).

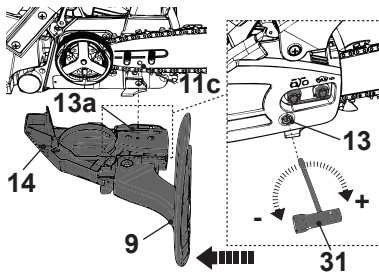


Fig. 6

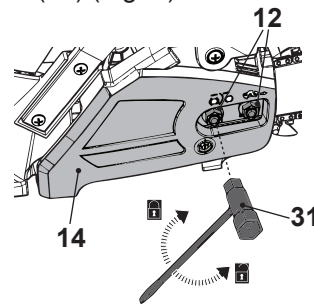


Fig. 7

Getting started...

Assembly



NOTE: Fix the nuts finger tight only at this stage. The chain tension cannot be adjusted with the retaining nut (12) tightened - they must be loosened first.



NOTE: The saw chain (10) has not yet been tensioned. Tension the chain as described under "Saw chain tensioning". After operating the product for approximately one hour, adjust the chain tension again.

Saw chain tensioning

Always check the saw chain tension before use, after the first cuts and regularly during use, approx. every five cuts. Upon initial operation, new chains can lengthen considerably. This is normal during the break-in period and the interval between future adjustments will lengthen quickly.



WARNING! Disconnect the spark plug connector (7) before adjusting saw chain tension!



The cutting edges of the saw chain are sharp! Always wear protective gloves when handling chain!



Always maintain proper chain tension! A loose chain increases the risk of kickback! A loose chain may jump out of the guide bar groove! This may injure the operator and damage the chain! A loose chain will cause rapid wear to the chain, guide bar and sprocket!

Tensioning the chain too tightly will overload the engine and cause damage, and insufficient tension can cause chain derailing, whereas a correctly tightened chain provides the best cutting characteristics and prolonged working life! The chain life mainly depends upon sufficient lubrication and correct tensioning!



NOTE: The chain tension cannot be adjusted with the retaining nuts (12) tightened - they must be loosened first.

1. Lift up the tip of the guide bar (11) and keep it there as you adjust the tension.
2. Turn the tension screw (13) clockwise until the chain 'tie straps' are just touching the bottom edge of the guide bar (11) (Figs. 8, 9).

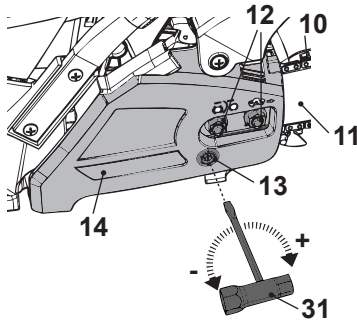


Fig. 8

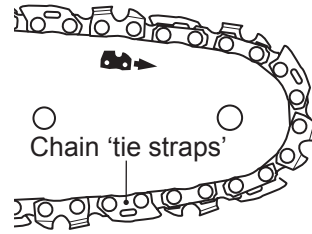


Fig. 9

3. Pull the saw chain (10) along the top of the guide bar (11) by hand from one end to the other, several times. The chain should feel tight but still move freely.

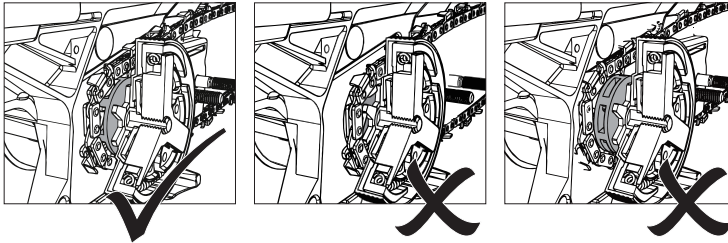


Fig. 10

4. Secure the cover (14) with the retaining nuts (12).

Tension test

1. Check the chain tension using one hand to lift the saw chain (10) against the weight of the product. The correct chain tension is achieved when the saw chain can be lifted by approximately 2 - 4 mm from the guide bar (11) in the centre (Figs. 11, 12).

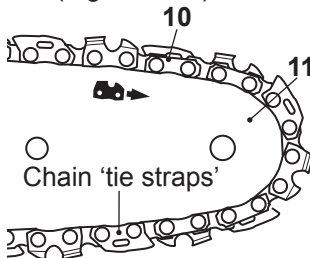


Fig. 11

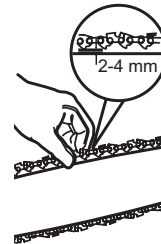


Fig. 12

2. Adjust the tension if you find that the saw chain (10) is too loose or tight.

Fuel and engine oil

This product is equipped with a 2-stroke engine, the fuel and oil tank are combined and it is essential to fill a fuel-oil mixture before operating this product. Observe the technical specifications for suitable fuel and engine oil.

Assembly



WARNING! Fuel and oil are highly inflammable! Fumes will explode if lit! Ensure that there are no naked flames around the product! Do not smoke while filling fuel and oil!



1. Place the product on a stable, level surface. We recommend laying a non-flammable sheet under the product.
2. Use proper funnels. Avoid spilling and overfilling the tanks.
3. Always dispose of fuel, used oil and soiled objects according to local regulations (see section "Recycling and disposal").

Fuel



WARNING! This product is not supplied with petrol-oil mixture in the engine! Before operating this product it is essential to fill it with petrol-oil mixture!



1. Mix a regular-grade unleaded petrol and a quality engine oil for air cooled 2-stroke engines in the supplied fuel mixing bottle (30) (Fig. 13).
2. Use an anti-oxidant added quality oil expressly labelled for air-cooled 2 stroke engine use (JASO FC GRADE OIL or ISO EGC GRADE).
3. Do not use BIA or TWC (2 stroke water-cooling type) mixed oil.
4. The recommended mixing ratio for petrol: oil is 40:1.
5. The table indicates a reference for the quantities of petrol and oil to use for the preparation of the mixture.
6. Only use the scale 40:1 of the mixing bottle as reference for this product.
7. Petrol and oil have to be filled in respective sides accordingly to the scale marking on the bottle. For example, fill petrol to scale marking "5" first, and then fill 2-stroke oil to scale marking "5". This indicates a correct ratio of 40:1 when using the scale 40:1.

Petrol	Oil
[ml]	[ml]
100	2,5
200	5,0
300	7,5
400	10,0
500	12,5

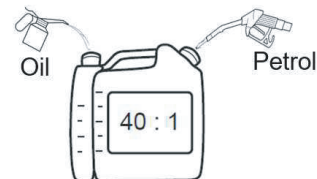


Fig. 13

- Tighten the two caps first. By tilting the tank, the oil falls into the petrol. Shake the fuel mixture thoroughly before filling the fuel tank.



NOTE: Never mix fuel and oil directly in the tank of the product. Use a fuel mixing bottle (30) that helps to ensure the correct mixing ratio. Shake gently to ensure a thorough mix of fuel and oil.

- Always use clean, fresh unleaded petrol. Purchase fuel in quantities that can be used within 30 days.
- Avoid getting dirt, dust or water in the fuel tank.
- Unscrew and remove the fuel tank cap (25) (Fig. 14).
- Fill correctly mixed fuel / oil into the tank using a fuel funnel fitted with a filter to avoid debris entering the tank. Do not overfill. Leave a minimum 5 mm of space between the top of the fuel and the inside edge of the tank to allow for expansion (Fig. 15).
- Wipe any spilled fuel with a soft cloth and reattach the fuel tank cap (25). Use the multi-tool (31) to tighten the fuel tank cap (25) properly (Fig. 14).

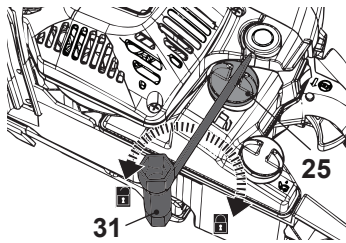


Fig. 14

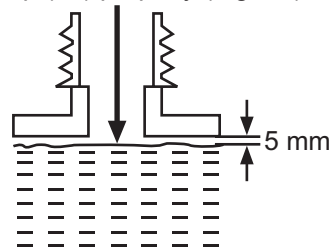


Fig. 15



NOTE: Fuel and oil deteriorate over time. It may be difficult to start the engine if you use fuel which has been kept for more than 30 days. Towards the end of the season, it is advisable to put only as much fuel in the tank as you need for each use, since it should be completely used up before storing the product. Empty remaining fuel from the tank when storing the product for over 30 days.

Assembly

Chain lubrication



WARNING! The product is not filled with chain oil. It is essential to fill the product with chain oil before using it! Never operate the product without chain oil as this will result in extensive damage to the product! Operating the saw chain dry or with too little chain oil will decrease cutting efficiency, shorten the product life span and cause rapid wear to the saw chain and guide bar from overheating! Insufficient chain oil is evident by smoke or bar discoloration! Adequate lubrication of the saw chain during cutting operations is essential to minimise friction with the guide bar!

1. Place the product on a stable, level surface with the chain oil tank cap (24) facing upward. We recommend laying a non-flammable sheet under the product.
2. Unscrew and remove the oil tank cap (24) (Fig. 16).

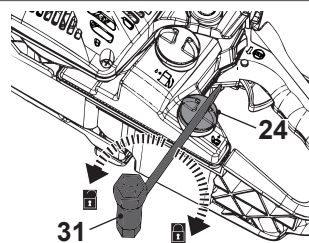


Fig. 16

3. Fill suitable lubricant into the tank using an oil funnel fitted with a filter to avoid debris entering the tank. Do not overfill and leave approximately 5 mm of space between the top of the oil and the inside edge of the tank to allow for expansion (Fig. 17).

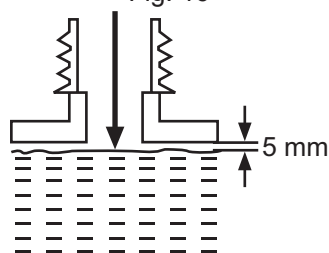


Fig. 17



NOTE: Use engine oil SAE#10W-30 all year round or SAE#30-#40 in summer and SAE#20 in winter.



NOTE: Towards the end of the season, it is advisable to put only as much lubricant in the tank as you need for each cut, so that it is completely used up before you store the product.

4. Wipe up spilled lubricant with a soft cloth and refit the oil tank cap (24). Use the multi-tool (31) to tighten the cap properly (Fig. 16).



NOTE: Always dispose of lubricant, used oil and objects contaminated with them in accordance with local regulations.

Checking



NOTE: Perform the following test before operating your product. This product is equipped with an automatic oiling system! The oiling system automatically delivers the proper amount of oil to the bar and chain!
Checking the lubrication requires starting the engine. Before checking, the product must be fully assembled and all instructions must have been read.

1. Make sure the guide bar (11) and the saw chain (10) are in place when you check the oil delivery.
2. Start the engine; keep it running at medium power and check if the chain oil is delivered as shown in the figure (Fig. 18).

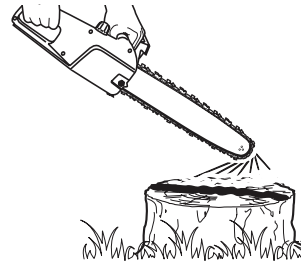


Fig. 18

3. Adjust the chain oil adjustment screw (22) of the oiler on the bottom of the product to adjust the chain oil flow using a supplied screwdriver (32), which is on the bottom of the product (Fig. 19).

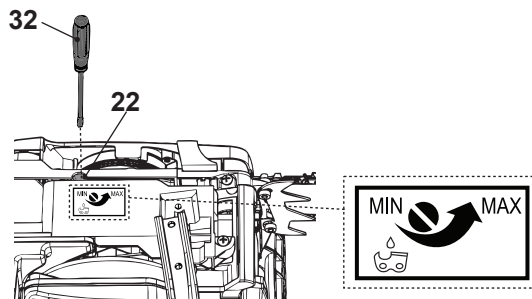
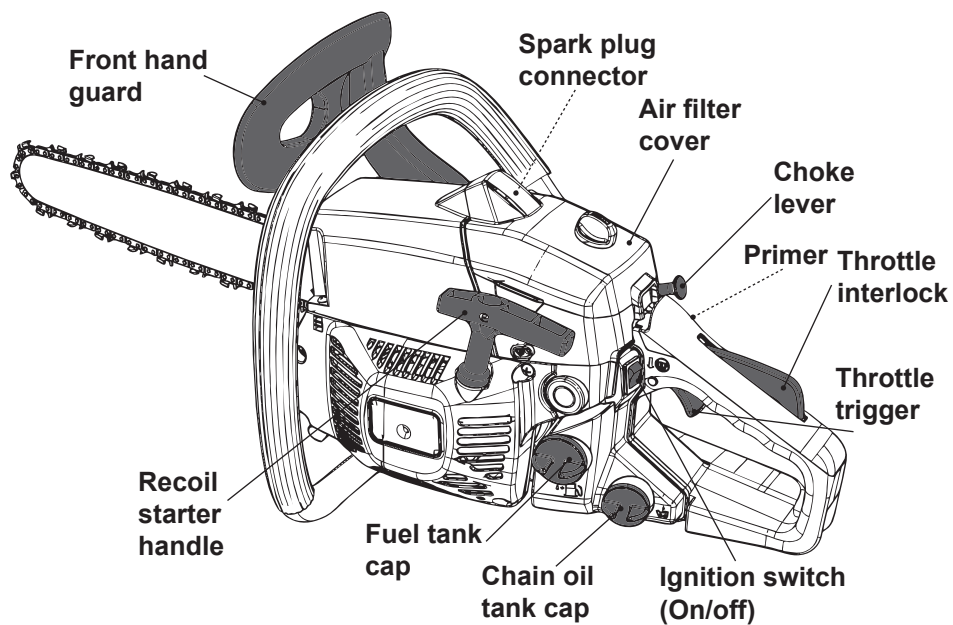


Fig. 19

Getting started...

Operating controls

Getting started...



Set up



Assemble



Adjust



Add fuel / oil mixture



Add oil

Cold start



Engage chain brake



Set ignition switch to "I"



Pull out choke lever (5) fully



Press primer (4) x6 until the bubble is filled with fuel (cold engine)



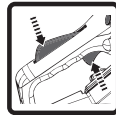
Pull recoil starter handle x4 until hearing a blasting sound



Press the choke lever (5) in, and the throttle is still at fast tickover



Pull recoil starter handle until engine start



Press throttle interlock (2) and throttle trigger (3) to cancel fast tickover



Disengage the chain brake



Operate

Getting started...

Warm start



Engage chain
brake



Set ignition
switch to "I"



Pull out choke
lever (5) fully



Press the
choke lever
(5) in



Pull recoil
starter handle
until engine
start



Press throttle
interlock (2)
and throttle
trigger (3) to
cancel fast
tickover



Disengage the
chain brake



Operate

Stopping



Release
throttle
interlock (2)
and throttle
trigger (3)



Set ignition
switch to "O"

Storage



Empty fuel tank



Empty chain oil tank



Clean and maintain



Store



WARNING! This quick start provides only a short overview of how to start and stop the product! For safe use it is essential to read the entire instruction manual before first use!

Getting started...

Intended use

This petrol chain saw FPCSP41-3 is designated with a power output of 1.4 kW. The product is intended for cutting logs and limbs with a thickness of max. 350 mm.

It must not be used for cutting other materials, such as plastic, stone, metal, wood that contains foreign objects, or materials that are harmful to health. This product should not be used outside of domestic premises e.g. for cutting firewood in forested areas.

The product may only be used with the guide bar/saw chain combination stated within these instructions. The use of other types or sizes is not allowed.

With this product vertical and horizontal cuts can be performed. Longitudinal sections may only be cut by professionals.

For safety reasons it is essential to read the entire instruction manual before first operation and to observe all the instructions therein.

This product is intended for private domestic use only, not for any commercial trade use. It must not be used for any purposes other than those described.

Primer

Press the primer (4) 6 times when starting the product with a cold engine (Fig. 20). Do not press the primer for warm starts.

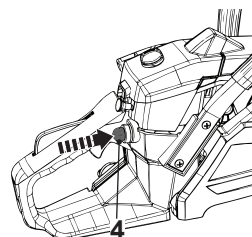


Fig. 20

Choke lever

1. By pulling out the choke lever (5) fully (Fig. 21a), the choke is now at CLOSE position, and the throttle is at fast tickover.
2. By pressing in the choke lever (5) (Fig. 21b), the choke is now at OPEN position while the throttle is kept at fast tickover.
3. To cancel fast tickover, press and release the throttle interlock (2) and throttle trigger (3).

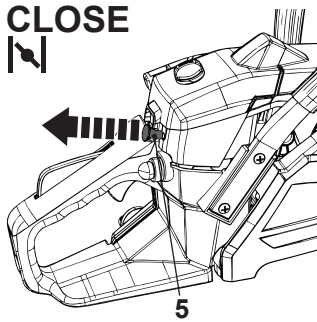


Fig. 21a

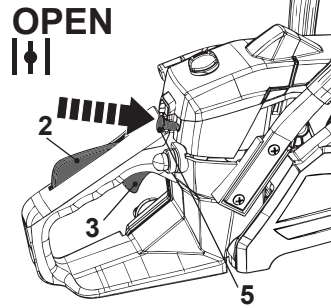


Fig. 21b



NOTE: It is easier to start the engine by setting the throttle at fast tickover. When the throttle fast tickover is cancelled, the engine runs at idle speed.

Chain brake

The chain brake is a safety mechanism activated by the front hand guard (chain brake lever) (9). When kickback occurs the chain stops immediately.

Disengage chain brake: When the chain brake lever (9) is in the disengaged position, the product can be operated with running saw chain (Fig. 22).

Engage chain brake: When the chain brake lever (9) is in the engaged position, the saw chain is stopped as soon as the chain brake is activated (Fig. 23).

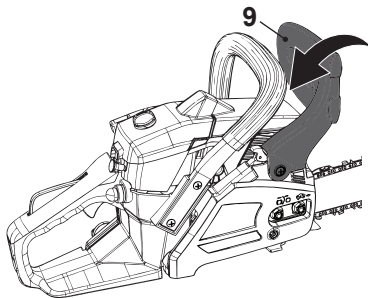


Fig. 22, disengage chain brake

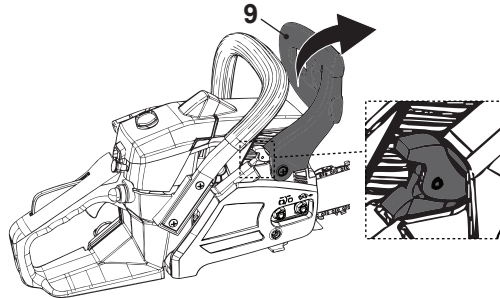


Fig. 23, Engage chain brake

Chain brake test



WARNING! Before operating this product, always check that the chain brake is in perfect working condition!

The following function check should be carried out before each use. The purpose of the chain brake testing is to reduce the possibility of injury due to kickback.

In more detail...

Chain brake

1. Make sure the chain brake is disengaged. Disengage the chain brake by pulling the front hand guard (9) back towards the front handle (8).
2. Place the product on any suitable flat surface, make sure the saw chain (10) is not touching the surface or other objects.
3. Grasp the front handle (8) with your left hand. Your thumb and fingers should encircle the handle. Grasp the rear handle (1) with your right hand. Your thumb and fingers should encircle the handle (Fig. 24).
4. Start the product as described, press the throttle interlock (2), then fully squeeze in the throttle trigger (3) with your index finger and hold in this position.
5. While the engine is running, engage the chain brake by rolling your left hand forward against the front hand guard (9). The saw chain (10) should stop immediately.

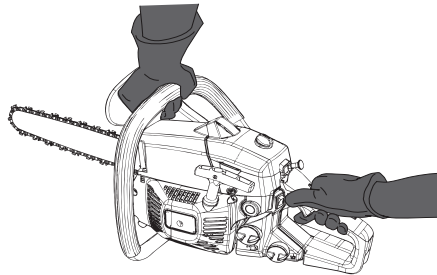


Fig. 24



WARNING! The saw chain will not start if the chain brake is in the engaged position.

Do not accelerate the engine for more than 10 seconds when the chain brake is in engaged position (Fig.22), as the chain brake system inside may damage the machine.



WARNING! If the saw chain (10) and engine fail to stop when the chain brake is engaged, take the product to the nearest authorised service centre or a similarly qualified person! Do not use the product if the chain brake is not in working properly!



WARNING! The front hand guard (9) should not be used for starting and stopping the product during normal operation!

Chain speed test



NOTE: Perform the following test before operating your product.

Start the product as described below and keep it in idle speed. The saw chain (10) must not move when the engine is running idle.



WARNING! If the saw chain shows any signs of moving, stop the engine immediately! Wait for all moving parts to stop! Contact an authorised service centre or a similarly qualified person to re-adjust idling speed!

Starting / Stopping

Cold start



WARNING! Make sure the saw chain (10) is not touching the ground or other objects when starting the product!
Ensure the rear handle (1) is in the upright position!

1. Push front hand guard (9) forward to engage the chain brake (Fig. 25, step 1). The saw chain (10) is now locked.
2. Set the ignition switch (23) to "1" position (On position) (Fig. 25, step 2).
3. Pull out the choke lever (5) fully. The choke lever (5) is now at CLOSE position (Fig. 24, step 3).
4. Press primer (4) 6 times until the bubble is filled with fuel (Fig. 25, step 4).
5. Hold the product firmly on the ground with left hand on the front handle (8). Your thumb and fingers shall grasp the handle.
6. Place the right foot onto the rear hand safeguard and step down.
7. Pull the recoil starter handle (26) slowly with your right hand until you feel a definite resistance and then give it a brisk, strong pull. Repeat 4 times until you hear a blasting sound (Fig. 25, step 5). At this stage the engine will not start.



WARNING! Allow the rope to return slowly and in a controlled manner after each pull! Do not pull out the recoil starter beyond the red colour band at the end of the recoil starter!

8. Push the choke lever (5) fully back in (Fig. 25, step 6). The choke lever is now at OPEN position, and throttle is kept at the fast tickover position.
9. Pull the recoil starter handle (26) again until the engine starts.
10. Press the throttle interlock (2) and the throttle trigger (3) to cancel fast tickover (Fig. 25, step 8). The engine runs at idle speed.
11. Let the product run idle for about 30 seconds to warm it up.
12. Once the engine is running smoothly, carefully pull the front hand guard (9) back toward the front handle (8) to disengage the chain brake (Fig. 25, step 9).

In more detail...

Starting / Stopping



NOTE: When the choke is at OPEN position and the engine speed gets inconsistent. Then pull the choke slightly out to middle position to allow additional time for warming up. After warm-up push the choke back to OPEN position.

13. Hold the product with the left hand on front handle (8) and the right hand on rear handle (1).
14. Press the throttle interlock (2) and then squeeze throttle trigger (3) to accelerate the engine. The saw chain runs.

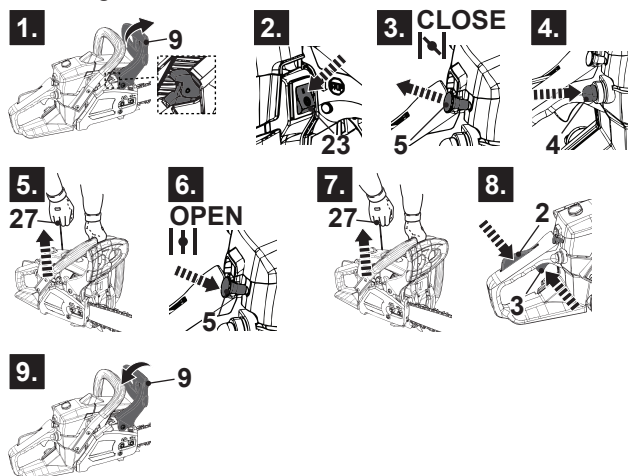


Fig. 25

Warm start

1. Push front hand guard (9) forward to engage the chain brake (Fig. 25, step 1). The saw chain is now locked.
2. Set the ignition switch (23) to "1" position (ON position) (Fig. 25, step 2).
3. Pull out the choke lever (5) fully. The choke lever (5) is now at CLOSE position (Fig. 25, step 3).
4. Push the choke lever (5) fully back in (Fig. 25, step 6). The choke lever is now at OPEN position, and throttle is kept at the fast tickover position.
5. Hold the product firmly on the ground with left hand on the front handle (8). Your thumb and fingers shall grasp the handle.
6. Place the right foot onto the rear hand safeguard and step down.
7. Pull the recoil starter handle (27) lightly until you feel resistance then pull it rapidly (Fig. 25, step 7). Do it again until the engine starts.
8. Press the throttle interlock (2) and the throttle trigger (3) to cancel fast tickover (Fig. 25, step 8). The engine runs at idle speed.

9. Once the engine is running smoothly, carefully pull the front hand guard (9) back toward the front handle (8) to disengage the chain brake (Fig. 25, step 9).
10. Hold the product with the left hand on front handle (8) and the right hand on rear handle (1).
11. Press the throttle interlock (2) and then squeeze throttle trigger (3) to accelerate the engine. The saw chain runs.



NOTE: If the engine does not start, the engine may be flooded. Flooding is caused by too much fuel mixture applied at the wrong time and can prevent a product from starting. Follow below procedure:
Set the ignition switch (23) to "0" position (OFF position). Push the choke lever (5) fully back to OPEN position. Remove the air filter cover (6a) and the spark plug (7a) and dry it. Pull the recoil starter handle (27) for several times to drain the fuel from the combustion chamber. Wait until fuel vapours and refit the spark plug (7a). Clean up any spilled fuel and move the product at least 3 metres (10') away before starting the engine to avoid any accidental fire. Wait the engine to cool down and then start the product as described in section "Cold start".

Stopping

1. Release the throttle interlock (2) and the throttle trigger (3) and let the product run at its idle speed for 10 – 15 seconds (Fig. 26, step 1).
2. Set the ignition switch (23) to "0" position (OFF position) (Fig. 26, step 2).

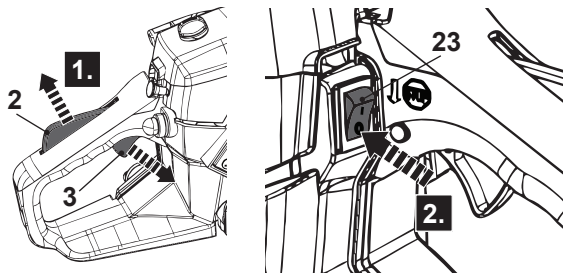


Fig. 26



WARNING! The saw chain (10) will continue to run for short time even after the engine has been switched off! Wait until the saw chain (10) has come to a complete stop before placing the product on the ground!



NOTE: The product will become very warm after a long time using; allow it to cool down completely before restart. If the product cannot be switched on with warm start procedure, then refer to the cold start procedure.

General operation

1. Check the product, as well as accessories for damage before each use. Do not use the product if it is damaged or shows wear.
2. Double check that accessories and the guide bar/saw chain are properly fixed.
3. Check the fuel / oil mixture level and chain oil level, refill if necessary.
4. Remove the protective cap (18a) from the spiked bumper (18) before use.
5. Always hold the product by its handles. Keep the handles dry and free from lubrication to ensure safe support.
6. Ensure that the air vents (28) are always unobstructed and clear. Clean them if necessary with a soft brush. Blocked air vents may lead to overheating and damage the product.
7. Stop the engine immediately if you are disturbed while working by other people entering the working area. Always let the product come to a complete stop before leaving the product unattended.
8. Do not overwork yourself. Take regular breaks to ensure you can concentrate on the work and have full control over the product.

Basic operating / cutting procedure

1. To become proficient attend a recognised chain saw training course to learn how to operate chain saws safely and effectively. Familiarise yourself with all the controls and switches. Practise all movements with the product switched off.
2. Always hold the product firmly with both hands. Front handle (8) with the left hand and rear handle (1) with the right hand. Fully grip both handles at all times during operation. Never operate the product using only one hand.
3. Only use the product with a secure stance. Hold the product at the right-hand side of your body (Fig. 27).
4. Check the proper lubrication as described in section "Assembly-Chain lubrication" before performing any cut.



Fig. 27

5. Ensure the saw chain (10) is running at full speed before it makes contact with the wood. Use the spiked bumper to secure the product onto the wood before starting to cut and use it as a leverage point while cutting (Fig. 28).
6. Reset the spiked bumper at a low point when cutting thicker logs by pulling the product slightly backwards until the gripping teeth release, and reposition at lower level to continue sawing. Do not remove the product completely from the wood.
7. Do not force the saw chain while cutting, let the chain do the work, using the gripping teeth to apply minimal leverage pressure.
8. Do not operate the product with arms fully extended or attempt to saw areas which are difficult to reach, or on a ladder. Never use the product above shoulder height (Fig. 29).

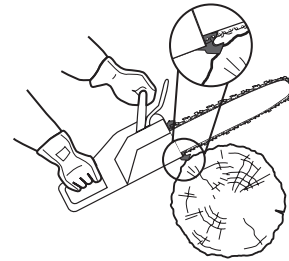


Fig. 28

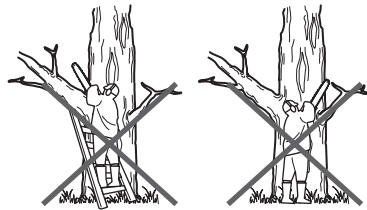


Fig. 29

9. Optimum sawing is achieved if the chain speed remains constant during cutting.
10. Be careful when reaching the end of the cut. The weight of the product may change unexpectedly as it cuts free from the wood. This can cause accidents to the legs and feet. Always remove the product from a wood cut while the product is running.
11. Check that the oil feed to the chain is operating correctly; run the chain saw at medium speed and ensure that the chain has received a consistent coating of oil.

Kickback



WARNING! Beware of kickback! Kickback can lead to dangerous loss of control of the product and result in serious or fatal injury to the operator or anyone standing close by! Always be alert because rotational kickback and pinch kickback are major product operational dangers and the leading cause of most accidents!

Kickback may occur if the nose or tip of the guide bar touches an object, or if wood pinches the saw chain in the cut.

In some cases, contact with the tip of the guide bar (11) may cause a lightning-fast reverse reaction, kicking the guide bar up and back toward the operator (Figs. 30 - 32).

In more detail...

Basic operating / cutting procedure

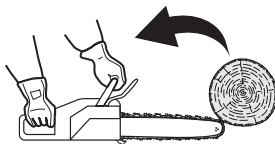


Fig. 30

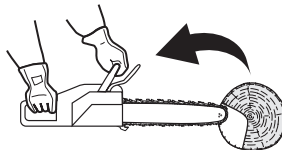


Fig. 31

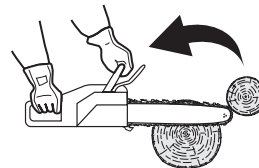


Fig. 32

1. Pinching of the saw chain (10) along the bottom of the guide bar (11) may pull the product forward away from the operator (Fig. 33).
2. Pinching of the saw chain (10) along the top of the guide bar (11) may push the guide bar rapidly back toward the operator (Fig. 34).

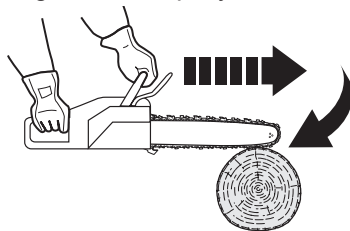


Fig. 33

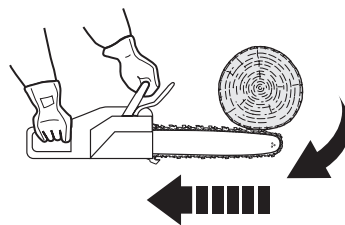


Fig. 34

3. Any of these reactions may cause a loss of control over the product, which could result in serious personal injury or even death.
4. With a basic understanding of 'kickback', the element of surprise can be reduced or eliminated. Sudden surprise contributes to the majority of accidents.
5. Keep a good firm grip on the product with both hands, your right hand on the rear handle (1) and your left hand on the front handle (8), when the engine is running. Maintain a firm grip with your thumbs and fingers encircling the handles (1, 8). A firm grip will help you reduce 'kickback' and maintain control of the product.
6. You should read all the safety warnings and user instructions carefully before attempting to operate this product.

To avoid kickback:

1. Saw with the guide bar at a flat angle.
2. Never work with a loose, widely stretched or heavily worn chain.
3. Ensure the chain is sharpened correctly.
4. Never saw above shoulder height.
5. Never work with the tip of the guide bar.
6. Always hold the product firmly with both hands.
7. Always use a low kickback chain.

In more detail...

8. Apply the metal gripping teeth for leverage the work piece.
9. Ensure correct chain tension.
10. Do only cut with the engine at high speeds.
11. Do not let the nose of the guide bar contact a log, branch, or any other obstruction which could be hit while you are operating the product.
12. Follow manufacturer's sharpening and maintenance instructions for the saw chain.
13. Only use replacement guide bars and saw chains specified by the manufacturer or equivalent replacements.



WARNING! Most 'kickback' accidents happen during limbing! Pay close attention to the position of the 'kickback' zone of the bar when you are 'limbing' branches that are under tension.

Felling a tree

1. When bucking and felling operations are being performed by two or more persons at the same time, the felling operations should be separated from the bucking operation by a distance of at least twice the height of the tree being felled. Trees should not be felled in a manner that would endanger any person, strike any utility line or cause any property damage. If the tree does make contact with any utility line, the company should be notified immediately.
2. The product operator should keep on the uphill side of the terrain as the tree is likely to roll or slide downhill after it is felled.
3. An escape path should be planned and cleared as necessary before cuts are started. The escape path should extend back and diagonally to the rear of the expected line of fall (Fig. 35).
4. Before felling is started, consider the natural lean of the tree, the location of larger branches and the wind direction to judge which way the tree will fall.
5. Remove dirt, stones, loose bark, nails, staples and wire from the tree.

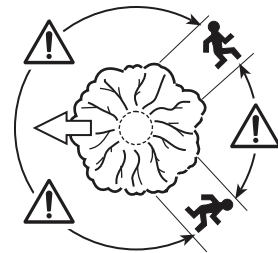


Fig. 35

Notching undercut

1. Make the notch (Fig. 36, B) 1/3 the diameter of the tree, perpendicular to the direction of falls (Fig. 36). Make the lower horizontal notching cut first. This will help to avoid pinching either the saw chain or the guide bar when the second notch is being made.

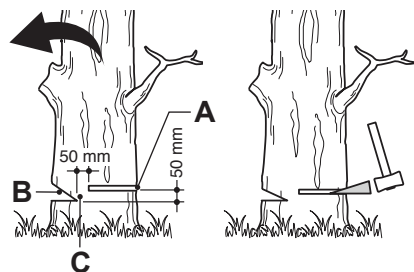


Fig. 36

In more detail...

Felling a tree

Felling back cut

1. Make the felling back cut (Fig. 36, A) at least 50 mm higher than the horizontal notching cut (Fig. 36). Keep the felling back cut parallel to the horizontal notching cut. Make the felling back cut so enough wood is left to act as a hinge. The hinge (Fig. 36, C) wood keeps the tree from twisting and falling in the wrong direction. Do not cut through the hinge.
2. As the felling gets close to the hinge, the tree should begin to fall. If there is any chance that the tree may not fall in desired direction or it may rock back and bind the saw chain, stop cutting before the felling back cut is complete and use wedges of wood, plastic or aluminium to open the cut and drop the tree along the desired line of fall.
3. When the tree begins to fall remove the product from the cut, stop the engine, put the product down, then use the retreat path planned. Be alert for overhead limbs falling and watch your footing.

Limbing and pruning

Limbing is removing the branches from a fallen tree. When limbing leave larger lower limbs to support the log off the ground. Remove the small limbs in one cut (Fig. 37). Branches under tension should be cut from the bottom up to avoid binding the product.

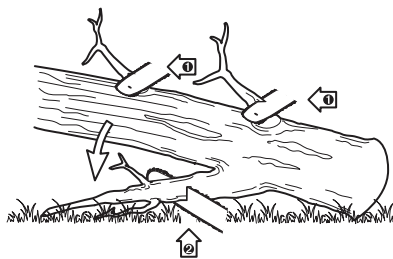


Fig. 37



WARNING! Never climb into a tree to limb or prune! Do not stand on ladders, platforms, logs, or in any position which may cause you to lose the balance or control of the saw! When pruning trees, it is important not to make the flush cut next to main limb or trunk until you have cut off the limb further out to reduce the weight! This prevents stripping the bark from the main member!



WARNING! If the limbs to be pruned are above chest height, hire a professional to perform the pruning!

Cutting spring poles

A spring pole is any log, branch, rooted stump, or sapling which is bent under tension by other wood so that it springs back if the wood holding it is cut or removed (Fig. 38).



Fig. 38

On a fallen tree, a rooted stump has a high potential of springing back to the upright position during the bucking cut to separate the log from the stump. Watch out for spring poles, they are dangerous.

Bucking a log

Bucking is cutting a log into lengths. It is important to make sure your footing is firm and your weight is evenly distributed on both feet. When possible, the log should be raised and supported by the use of limbs, logs or chocks.

1. Follow the simple directions for easy cutting. When the log is supported along its entire length (Fig. 39), it is cut from the top (overbuck).
2. When the log is supported on one end (Fig. 40), cut 1/3 the diameter from the underside (underbuck). Then make the finished cut by overbucking to meet the first cut.

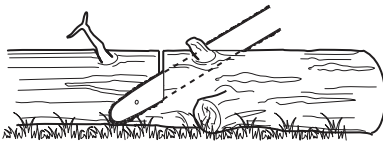


Fig. 39

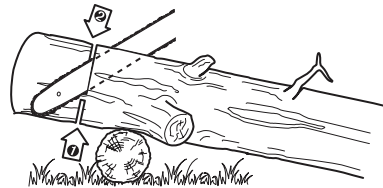


Fig. 40

3. When the log is supported on both ends (Fig. 41), cut 1/3 the diameter from the top (overbuck). Then make the finished cut by underbucking the lower 2/3 to meet the first cut.
4. When bucking on a slope always stand on the uphill side of the log (Fig. 42). When "cutting through", to maintain complete control release the cutting pressure near the end of the cut without relaxing your grip on the product handles. Do not let the chain contact the ground. After completing the cut, wait for the saw chain to stop before you move the product. Always stop the engine before moving from tree to tree.

In more detail...

Bucking a log

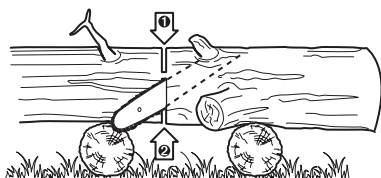


Fig. 41



Fig. 42

5. Support small logs on a sawing stand or another log while bucking (Fig. 42).
6. If the wood diameter is large enough for you to insert a soft bucking wedge without touching the chain, you should use the wedge to hold the cut open to prevent pinching (Fig. 43).



Fig. 43

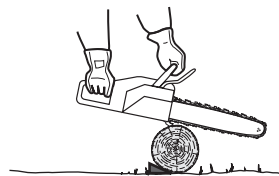


Fig. 44

After use

1. Switch the product off, disconnect the spark plug connector (7) and let it cool down.



WARNING! The spark plug (7a) will stay hot for a longer period of time after operation!

2. Check, clean and store the product as described below.

The golden rules for care



WARNING! Always switch the product off, disconnect the spark plug connector (7) and let the product cool down before performing inspection, maintenance and cleaning work!

Maintain this product regularly and carefully! If the product is improperly maintained, it may fail at its intended task, which may produce fatal consequences.

1. Keep the product clean. Remove debris from it after each use and before storage.
2. Regular and proper cleaning will help ensure safe use and prolong the life of the product.
3. Inspect the product before each use for worn and damaged parts. Do not operate it if you find broken and worn parts. Replace worn parts as necessary or contact an authorised service centre for repair before using the product again.



WARNING! Only perform repairs and maintenance work according to these instructions! All further works must be performed by a qualified specialist!

General Cleaning

1. Clean the product with a slightly damp cloth and mild soap. Use a brush for areas that are hard to reach.
2. In particular clean the air vents (28) after every use with a cloth and brush.
3. Remove stubborn dirt with high pressure air (max. 3 bar).



NOTE: Do not use chemical, alkaline, abrasive or other aggressive detergents or disinfectants to clean this product as they might be harmful to its surfaces.

4. Check for worn or damaged parts. Replace worn parts as necessary or contact an authorised service centre for repair before using the product again.

Sprocket wheel lubrication



NOTE: It is not necessary to remove the saw chain (10) to lubricate the sprocket wheel (11b). Lubrication can be done on the job.

In more detail...

General Cleaning

1. Clean the sprocket wheel (11b).
2. Using a disposable lube gun, insert the needle nose into the lubrication hole (11a) and inject grease until it appears at the outside edge of the sprocket wheel (11b) (Fig. 45).
3. Make sure that the chain brake is disengaged. Rotate the saw chain (10) by glove hand. Repeat the lubrication procedure until the entire sprocket wheel (11b) has been greased.

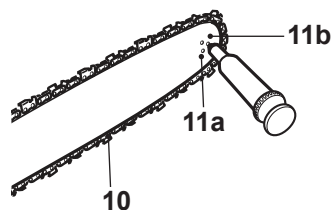


Fig. 45

Guide bar and saw chain maintenance

Most guide bar problems can be prevented merely by keeping the product well maintained. Incorrect filing and non-standard cutter and depth gauge settings are the causes of most guide bar problems, primarily resulting in uneven bar wear. As the bar wears unevenly, the rails widen, which may cause the chain to clatter and make it difficult to complete straight cuts. If the guide bar is insufficiently lubricated and the product is operated with a saw chain which is too tight, this will contribute to rapid bar wear. To help minimise bar wear, maintenance of the guide bar as well as the saw chain is recommended.

1. Disassemble the guide bar and saw chain in reversed order from assembly.
2. Check the oiling port (16) for clogging and clean if necessary to ensure proper lubrication of the guide bar and saw chain during operation. Use a soft wire small enough to insert into the oil discharge hole (Fig. 46).

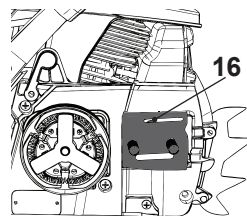


Fig. 46



NOTE: The condition of the oil passages can be easily checked. If the passages are clear, the chain will automatically give off a spray of oil within seconds of the product starting. Your product is equipped with an automatic oiling system.

3. Check the drive sprocket (21). If it is worn or damaged due to strain, have it replaced by an authorised service centre or a similarly qualified person.
4. Clear residue from the rails on the guide bar (11) using a screwdriver, putty knife, wire brush or other similar tool. This will keep the oil passages open to provide proper lubrication to the guide bar (11) and saw chain (10) (Fig. 47).

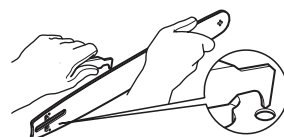


Fig. 47

5. Check the guide bar 'rail' for wear: Hold a ruler (straight edge) against the side of the guide bar and 'cutter side plates'. If there is a gap between the ruler and guide bar the guide bar 'rail' is normal. If there is no gap (ruler flush against the side of the guide bar) the guide bar 'rail' is worn and needs to be replaced with a new one of the same type (Fig. 48).

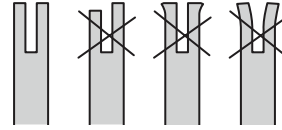


Fig. 48

6. Turn the guide bar 180° to allow even wear, thereby extending the life span of the guide bar (11).
7. Check the saw chain for possible wear and damages. Replace it with a new one if required. Experienced user can sharpen a dull saw chain (see section "Saw chain sharpening" below).
8. Refit the saw chain (10) and the guide bar (11) as described under section "Assembly- Chain and guide bar".

Saw chain sharpening



NOTE: Never saw with a blunt chain. The saw chain (10) is blunt if you have to push the product into the tree and the chips are very small.

1. Have the saw chain (10) sharpened professionally at an authorised service centre or sharpen the chain yourself by using a proper sharpening kit. Also observe the sharpening instructions supplied with the sharpening kit.



WARNING! Only sharpen the saw chain (10) yourself if you are trained and have experience! Use proper tools to sharpen the saw chain!

2. The height difference between the tooth and the ridge is the cutting depth. When sharpening the saw chain (10) you have to consider the following points (Fig. 49).

- File angle
- Cutting angle
- File position
- Diameter of round file
- File depth

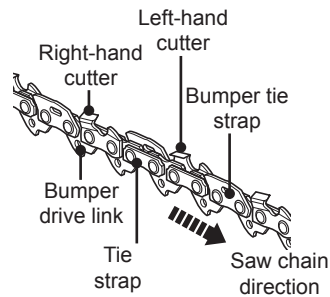


Fig. 49

3. To sharpen the chain proceed as follows:
 - Use protective gloves.
 - Ensure the chain is correctly tensioned.
 - Engage the chain brake to lock the chain on the bar.

General Cleaning

- Use the chain file (not delivered), whose diameter is 1.1 times the cutting tooth depth. Make sure 20% of the file diameter is above the cutter's top plate.



NOTE: A file guide is available from most reputable tool merchants and is the easiest way to hold the file at the correct position.

- File at an angle perpendicular to the bar, and at an angle of 30° to the direction of travel (Fig. 50).
- File each tooth from the inside towards outside only. File one side of the chain first than turn the saw around and repeat the process.
- Sharpen each tooth equally by using the same number of strokes.
- Keep all cutter lengths equal. Check the safety depth gauge height every 5 sharpenings. If the depth gauges are also trimmed it is essential that the original profile be restored.
- Use a depth gauge measuring instrument to check the height of the depth gauge. Depth gauge measuring jigs are available from most reputable tool merchants (Fig. 51).

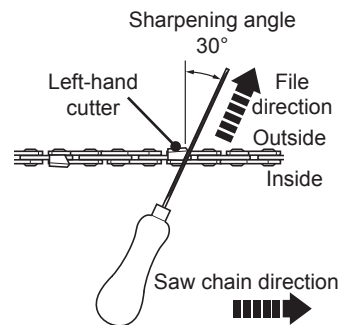


Fig. 50

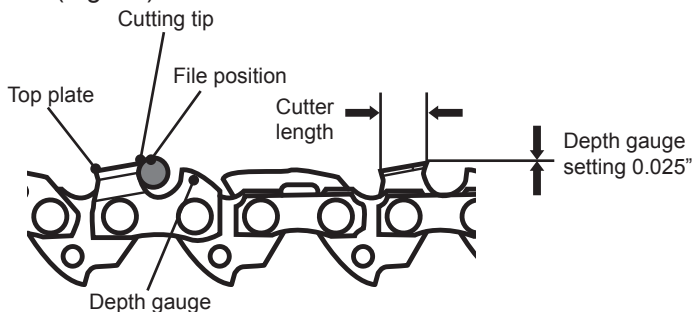


Fig. 51

Air filter

Wash the air filter (6b) every 25 hours (if too dusty, every 10 hours) with clear water and dry it. Dip the air filter into clean machine oil if necessary. It can be used after superfluous oil is eliminated.

Inspect the air filter (6b) regularly. Replace it with a new one if necessary.

1. Loosen the fixing screw (6) (Fig. 52, step 1) and remove the air filter cover (6a) to reach the air filter (6b).
2. Remove the air filter (6b) from the supporting bolt, and keep the rubber sealing (6c) in place to avoid loss (Fig. 52, step 2).
3. Tap the air filter (6b) on a solid surface to remove dust.
4. Apply a small amount of air filter oil on the air filter (6b) to increase the performance of the air filter. Wring out surplus oil and pass the air filter (6b) through the supporting bolt. Ensure the rubber sealing (6c) is in place.
5. Re-attach the air filter cover (6a) and secure it with the fixing screw (6).

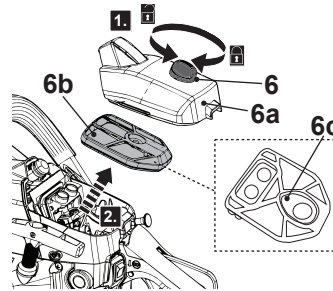


Fig. 52

Spark plug

Inspect the spark plug (7a) every 25 hours or prior to long-term storage over 30 days if the use has not been this high. Clean or replace with a new one if necessary.

1. Loosen the fixing screw (6) (Fig. 53, step 1) and remove the air filter cover (6a) to reach the spark plug connector (7).
2. Disconnect the spark plug connector (7) (Fig. 53, step 1).
3. Loosen the spark plug (7a) anticlockwise using the multi-tool (31) and remove it carefully (Fig. 53, step 2).

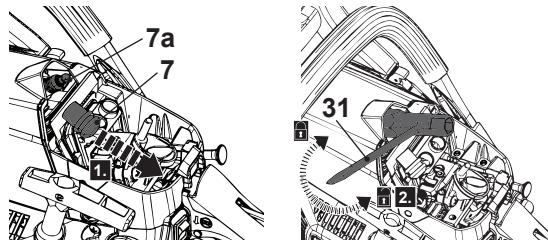


Fig. 53

4. Check the spark plug (7a) for damage and wear. The colour of the electrode should be light-brown coloured.
5. Remove debris from the electrode with a soft wired brush; avoid heavy cleaning of the electrode.
6. Dry the spark plug (7a) with a soft cloth if it is wet from fuel.
7. Check the spark plug gap. It should be 0.5 mm (Fig. 54).

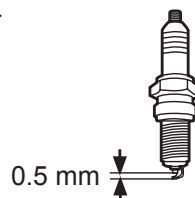


Fig. 54

General Cleaning

8. Replace with a new spark plug if either the electrode or the insulation is damaged.
9. When replacing the spark plug (7a), first screw it in hand tight and then lightly tighten it with the multi-tool (31).
10. Refit the spark plug connector (7); ensure the rubber pad around the spark plug connector is in correct position.



WARNING! Do not over tighten the spark plug (7a) to avoid any damage!

11. Re-attach the air filter cover (6a) and secure it with the fixing screw (6) afterward.

Fuel tank

1. Empty the fuel tank when storing the product over 30 days to prevent the fuel deteriorating.
2. Unscrew and remove the fuel tank cap (25) and use a proper fuel pump to empty the fuel into a suitable container.



WARNING! Do not store the fuel in the fuel mixing bottle (30)!

Fuel filter

The fuel tank of this product is fitted with a filter, which is attached on the end of the fuel pipe. Ask an authorised service centre or a similarly qualified person to check and replace the filter at regular intervals if required.

Carburettor

The carburettor has been carefully set at the factory. The cutting attachment must not rotate in correct idle speed. Adjustment may be necessary if you notice that the engine is not in correct idle speed (i.e engine stalls or the cutting attachment keeps rotating when the throttle is released). Idle speed adjustment must be carried out by a trained technician or Contact an authorised service centre or dealer to do.



WARNING! Keep others away when masking idle speed adjustment. Keep cutting attachment off the ground and will not contact with any object. The cutting attachment will be running during this procedure. Wear protective equipment and observe all safety precautions.

1. Release throttle and allow engine to idle.
2. Adjust the idle speed with the idle adjustment screw T which is identified with "T" mark (Fig. 55).
3. Turn the idle adjustment screw clockwise to increase engine idle speed.
4. Turn the idle adjustment screw counter-clockwise to decrease engine idle speed.
5. IF engine stalls or dies, increase idle speed until the cutting attachment starts to rotate. Then decrease idle speed slowly until the cutting attachment stops and turn the idle adjustment screw counter-clockwise more half-turn .
6. IF cutting attachment keep rotating, decrease idle speed slowly until the cutting attachment stops and turn the idle adjustment screw counter-clockwise more half-turn.

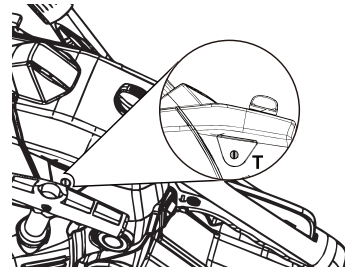


Fig. 55

Muffler

Should it be necessary to modify or replace the muffler (15a), contact an authorised service center or a similarly qualified specialist. Do not attempt to make any adjustments by yourself.

Silencer

Should it be necessary to modify or replace the silencer, please contact an authorised service centre or a similarly qualified person.

Maintenance

Before and after each use, check the product and accessories (or attachments) for wear and damage. If required, exchange them for new ones as described in this instruction manual. Observe the technical requirements.



NOTE: Always empty the fuel tank and keep the air filter (6b) / the spark plug (7a) upside. Otherwise the fuel or engine oil will contaminate them and cause difficulties to start the engine.

Maintenance

Part	To do	Before/ after each use	10 hours	25 hours	50 hours / half year	100 hours / once a year
Cylinder fin	clean		x			
Spark plug	check			x		
	clean			x		
	replace	whenever necessary				
Air filter	check	x				
	clean		x			
	replace	whenever necessary				
Fuel filter	check	x				
	clean		x			
	replace	whenever necessary				
Saw chain	check	x				
	lubricate	x				
	clean	x				
	replace	whenever necessary				

Spare parts/Replacement parts

The following parts of this product may be replaced by the consumer. Spare parts are available at an authorised dealer or through our customer service.

Description	Model no. or Specification
Spark plug (7a)	L8RTF
Saw chain (10)	3/8"LP-050"-53DL
Guide bar (11)	M1501453-1041L



NOTE: If non-approved saw chain and guide bar combinations are used, it will result in serious or fatal injury to the operator.

Repair

This product does not contain any parts that can be repaired by the consumer. Contact an authorised service centre or a similarly qualified person to have it checked and repaired.

Storage



NOTE: Good storage conditions are important for keeping your product trouble free.

1. Switch the product off and disconnect the spark plug connector (7).
2. Clean the product as described in the “Cleaning” section.
3. Store the product and its accessories in a dry, frost-free, well-ventilated place.
4. Always store the product in a place that is inaccessible to children. The ideal storage temperature is between 10°C and 30°C.
5. We recommend using the original package for storage or covering the product with a suitable cloth or enclosure to protect it against dust.
6. Empty the fuel tank if you are not going to use the product for an extended period of time (more than 30 days) and before storing it for the winter.

Transportation

1. Switch the product off and disconnect the spark plug connector (7).
2. Attach the guide bar cover, transportation guards, if applicable.
3. Always carry the product by its handles (1, 8).
4. Protect the product from any heavy impact or strong vibrations which may occur during transportation in vehicles.
5. Secure the product to prevent it from slipping or falling over, loss of fuel, damage and injury.

In more detail...

Troubleshooting

Suspected malfunctions are often due to causes that the users can fix themselves. Therefore check the product using this section. In most cases the problem can be solved quickly.



WARNING! Only perform the steps described within these instructions! All further inspection, maintenance and repair work must be performed by an authorised service centre or a similarly qualified specialist if you cannot solve the problem yourself!

Problem	Possible cause	Solution
1. Engine does not start	1.1. Not enough fuel in fuel tank	1.1. Add fuel
	1.2. Spark plug is wet	1.2. Dry spark plug
	1.3. Spark plug is damaged	1.3. Replace spark plug
	1.4. Spark plug connector is loose	1.4. Attach properly
	1.5. Ignition switch is not set to ON/start position	1.5. Set the ignition switch to ON/start position
	1.6. Air filter is dirty	1.6. Clean air filter
	1.7. Spark plug is loose	1.7. Tighten spark plug 18-22 Nm
	1.8. Spark plug gap is incorrect	1.8. Set gap between electrodes at 0.7 to 0.8 mm
	1.9. Carburetor is flooded with fuel	1.9. Remove the spark plug and pull recoil starter handle continuously until carburetor clears itself
	1.10. Faulty ignition module	1.10. Contact an authorised service agent
2. Engine stops	2.1. Not enough fuel in fuel tank	2.1. Add fuel
	2.2. Saw chain is blocked	2.2. Remove blockage
3. Engine difficult to start or loses power	3.1. Dirt, water or stale fuel in the tank	3.1. Drain fuel and clean tank. Fill tank with clean, fresh fuel
	3.2. Fuel filter / fuel tube clogged/worn	3.2. Contact an authorised service agent
	3.3. Vent hole in fuel tank cap is clogged	3.3. Clean or replace fuel tank cap
	3.4. Air filter is dirty	3.4. Clean air filter

Problem	Possible cause	Solution
4. Engine operates erratically	4.1. Spark plug is defective 4.2. Spark plug gap is incorrect 4.3. Air filter is dirty 4.4. Engine requires to warm up	4.1. Install new, correctly gapped plug 4.2. Set gap between electrodes at 0.5 mm 4.3. Clean air filter 4.4. Allow engine to completely warm up and run at idle speed for 5 minutes
5. Engine idles poorly	5.1. Air filter is dirty 5.2. Air vents are clogged 5.3. Cylinder fins are blocked	5.1. Clean air filter 5.2. Remove debris from vents 5.3. Remove debris from cylinder fins
6. Engine skips at high speed	6.1. Gap between electrodes of spark plug is too close	6.1. Set gap between electrodes at 0.5 mm
7. Engine overheats	7.1. Air vents are clogged 7.2. Incorrect spark plug 7.3. Saw chain is blocked	7.1. Remove debris from vents 7.2. Install correct spark plug and cylinder fins on engine 7.3. Remove blockage
8. Unsatisfactory result	8.1. Saw chain is not tensioned properly 8.2. Blunt saw chain	8.1. Tension properly 8.2. Sharp or replace the new one
9. Excessive vibration/ noise or exhaust	9.1. Saw chain is dull/ damaged 9.2. Bolts/nuts are loose 9.3. Petrol/oil type is incorrect	9.1. Replace with a new one 9.2. Tighten bolts/nuts 9.3. Drain the petrol/oil and refill with the correct petrol/oil

In more detail...

Recycling and disposal



Waste electrical products should not be disposed of with household waste. Please recycle where facilities exist.

Check with your Local Authority or local store for recycling advice.

Old products are potentially recyclable and do not, therefore, belong in your household rubbish. You are requested to assist us and our contribution to saving resources and protecting the environment by handing in this product at an equipped collection centre (if there is one available).

Petrol, oil, used oil, a mixture of oil and petrol and objects soiled with oil e. g. cleaning cloths do not belong in the household rubbish. Dispose of oil-contaminated items in accordance with the local guidelines and hand them in at recycling centres.

The product comes in a package that protects it against damage during shipping. Keep the package until you are sure that all parts have been delivered and the product is function properly. Recycle the package afterwards.

Guarantee

We take special care to select high quality materials and use manufacturing techniques that allow us to create products incorporating design and durability. This product has a manufacturer's guarantee of 2 years against manufacturing defects, from the date of purchase (if bought in store) or date of delivery (if bought online), at no additional cost for normal (non-professional or commercial) household use.

To make a claim under this guarantee, you must present your proof of purchase (such as a sales receipt, purchase invoice or other evidence admissible under applicable law), please keep your proof of purchase in a safe place. For this guarantee to apply, the product you purchased must be new, it will not apply to second hand or display products. Unless stated otherwise by applicable law, any replacement product issued under this guarantee will only be guaranteed until expiry of the original guarantee period.

This guarantee covers product failures and malfunctions provided the product was used for the purpose for which it is intended and subject to installation, cleaning, care and maintenance in accordance with the information contained in these terms and conditions, in the user manual and standard practice, provided that standard practice does not conflict with the user manual.

This guarantee does not cover defects and damage caused by normal wear and tear or damage that could be the result of improper use, faulty installation or assembly, neglect, accident, misuse, or modification of the product. Unless stated otherwise by applicable law, this guarantee will not cover, in any case, ancillary costs (shipping, movement, costs of uninstalling and reinstalling, labour etc), or direct and indirect damage.

This guarantee does not cover defects and damage caused by or resulting from:

- Normal wear and tear
- Overload, misuse or neglect
- Repairs attempted by anyone other than an authorised agent
- Cosmetic damage
- Damage caused by foreign objects, substances or accidents
- Accidental damage or modification
- Failure to follow manufacturer's guidelines
- Loss of use of the goods

If the product is defective, we will, within a reasonable time, repair or replace it.

Rights under this guarantee are enforceable in the country in which you purchased this product. Guarantee related queries should be addressed to the store you purchased this product from.

The guarantee is in addition to and does not affect your statutory rights.

In more detail...

Technical specifications

General

- > **Dimensions** : approx. 710 x 280 x 300 mm
- > **Machine mass (without guide bar and chain, empty tanks and in normal operating configuration)** : approx. 4.5 kg
- > **Machine mass (with guide bar and chain, empty tanks and in normal operating configuration)** : 5.23 kg
- > **Fuel tank capacity** : 260 ml
- > **Petrol type** : Octane rating of at least 90, unleaded, Maximum 10% renewable ethanol (E10 or below)
- > **Engine oil type** : Synthetic oil specifically for two-stroke engines, of JASO FC minimum specification.
- > **Mixture ratio petrol/oil** : 40:1
- > **Chain lubrication oil tank capacity** : 210 ml
- > **Chain lubrication oil type** : SAE #10W-30 all year round or SAE #30~#40 in summer and SAE #20 in winter
- > **Fuel consumption at max. engine power** : 0,6 kg/h

Engine

- > **Engine model** : RY1E40F
- > **Engine type** : air cooled, 2-stroke engine
- > **Engine displacement** : 41 cm³
- > **Engine idling speed range** : 3100±300 min⁻¹
- > **Engine speed with clutch engage** : 4300 min⁻¹
- > **Maximum engine power (acc. to ISO 7293)** : 1.4 kW
- > **Spark plug type** : L8RTF
- > **Spark plug gap** : 0.5 mm
- > **Carburetor** : Hualong, Huayi

Saw chain and guide bar

- > **Cutting length** : 33.5 cm
- > **Guide bar length** : (355 mm) 14"
- > **Saw chain type** : 3/8"LP-050"-53DL
- > **Guide bar type** : M1501453-1041TL

> Chain pitch	: 9,525 mm (0,375")
> Chain gauge	: 1.27 mm (0,050")
> Drive sprocket	: 6 teeth x 9.525 mm
> Max. chain speed	: 21 m/s
Sound level	
> Sound pressure level L_{pA}	: 98.8 dB(A)
> Uncertainty K_{pA}	: 3 dB(A)
> Sound power level L_{WA}	: 1109.6 dB(A)
> Uncertainty K_{WA}	: 2.5 dB(A)
> Guaranteed sound power level L_{WA}	: 114 dB(A)
Hand arm vibration level	
> Front handle, $a_{front\ hv,eq}$: 6.5 m/s ²
> Rear handle, $a_{rear\ hv,eq}$: 6.0 m/s ²
> Uncertainty K	: 1.5 m/s ²

The sound values have been determined according to noise test code given in EN ISO 11681-1, using the basic standards ISO 22868.

The noise figures quoted are emission levels and are not necessarily safe working levels. Factors that influence the actual level of exposure of work-force include the characteristics of the work room, the other sources of noise, etc. i.e. the number of products and other adjacent processes, and the length of time for which an operator is exposed to the noise. Also the permissible exposure level can vary from country. This information, however, will enable the user of the product to make a better evaluation of the hazard and risk.

Wear hearing protection! The sound intensity level for the operator may exceed 80 dB(A) and ear protection measures are necessary!

The declared vibration value has been measured in accordance with a standard test method (according to basic standard ISO 22867) and may be used for comparing one product with another. The declared vibration value may also be used in a preliminary assessment of exposure.

This product may cause hand-arm vibration syndrome if its use is not adequately managed.



WARNING! Depending on the actual use of the product the vibration values can differ from the declared total! Adopt proper measures to protect yourself against vibration exposures. Take the whole work process including times the product is running under no load or switched off into consideration.

Proper measures include among others regular maintenance and care of the product and application tools, keeping hands warm, periodical breaks and proper planning of work processes.

In more detail...



(EN) EU DECLARATION OF CONFORMITY
 (FR) DÉCLARATION UE DE CONFORMITÉ
 (PL) DEKLARACJA ZGODNOŚCI UE
 (RO) DECLARAȚIA DE CONFORMITATE UE
 (ES) DECLARACIÓN UE DE CONFORMIDAD
 (PT) DECLARAÇÃO DE CONFORMIDADE UE

Product/ Produit/ Produkt/Produsul/Producto/Produto

- 41cc Petrol Chain Saw
- FPCSP41-3
- 41cm³, 1.4kW
- 000001 - 999999

Name and address of the manufacturer or his authorised representative:

Nom et adresse du fabricant ou de son mandataire:

Nazwa i adres producenta lub jego upoważnionego przedstawiciela:

Denumirea și adresa producătorului sau a reprezentantului său autorizat:

Nombre y dirección del fabricante o de su representante autorizado:

Nome e endereço do fabricante ou do respetivo mandatário:

Kingfisher International Products B.V.,
 Rapenburgerstraat 175E,
 1011 VM Amsterdam,
 The Netherlands

This declaration of conformity is issued under the sole responsibility of the manufacturer.

La présente déclaration de conformité est établie sous la seule responsabilité du fabricant.

Niniejsza deklaracja zgodności wydana zostaje na wyłączną odpowiedzialność producenta.

Prezenta declarație de conformitate este emisă pe răspunderea exclusivă a producătorului.

La presente declaración de conformidad se expide bajo la exclusiva responsabilidad del fabricante.

A presente declaração de conformidade é emitida sob a exclusiva responsabilidade do fabricante.

Object of the declaration/Objet de la declaration/Przedmiot deklaracji/Obiectul declarației/Objeto de la declaración/
 Objeto da declaração

Product/Produit/Produkt/Produsul/Producto/Produto	Model/Modèle/Model/Modelul/Modelo/Modelo	EAN
41cc Petrol Chain Saw	FPCSP41-3	xxxx

The object of the declaration described above is in conformity with the relevant Union harmonisation legislation:

L'objet de la déclaration décrit ci-dessus est conforme à la législation d'harmonisation de l'Union applicable:

Wymieniony powyżej przedmiot niniejszej deklaracji jest zgodny z odnośnymi wymaganiami unijnego

prawodawstwa harmonizacyjnego:

Obiectul declarației descris mai sus este în conformitate cu legislația relevantă de armonizare a Uniunii:

El objeto de la declaración descrita anteriormente es conforme con la legislación de armonización pertinente de

la Unión:

O objeto da declaração acima descrito está em conformidade com a legislação de harmonização da União

aplicável:

2006/42/EC as amended	Machinery Directive
2014/30/EU as amended	Directive Electromagnetic compatibility
2000/14/EC as amended	Outdoor Noise Directive
(EU)2016/1628	Regulation Gaseous and Particulate Pollutant Emission Limits
2011/65/EU as amended	Directive Restriction of the use of certain hazardous substances in electrical and electronic equipment
Directive 2006/42/CE	relative aux machines
2014/30 / UE	telle que modifiée Directive Compatibilité électromagnétique
Directive 2000/14/CE	relative aux émissions sonores extérieures
Règlement (UE) 2016/1628	relatif aux exigences concernant les limites d'émission pour les gaz polluants et les particules polluantes
Directive 2011/65/UE	relative à la limitation de l'utilisation de certaines substances dangereuses dans les équipements électriques et électroniques
2006/42/WE	w zmienionej dyrektywie maszynowej
2014/30 / UE	ze zmianami Dyrektywa Kompatybilność elektromagnetyczna
2000/14/WE	w zmienionej dyrektywie w sprawie hałasu na zewnątrz
2016/1628/UE	limity emisji zanieczyszczeń gazowych i cząstek stałych
2011/65 / UE	ze zmianami Dyrektywa Ograniczenie stosowania niektórych niebezpiecznych substancji w sprzęcie elektrycznym i elektronicznym
2006/42/CE,	astfel a fost modificată Directiva privind echipamentele
2014/30/UE,	astfel a fost modificată Directiva privind compatibilitatea electromagnetică
2000/14/CE,	astfel a fost modificată Directiva privind zgomotul în aer liber
2016/1628/UE	Regulamentul privind emisiile de poluanți gazoși și de particule poluante
2011/65/UE,	astfel a fost modificată Directiva privind limitarea utilizării anumitor substanțe periculoase în echipamentele electrice și electronice
Directiva sobre maquinaria	modificada 2006/42/CE
2014/30/UE	modificada Directiva Compatibilidad electromagnética
2000/14/CE	modificada Directiva sobre ruido al aire libre
2016/1628/Reglamento	de la UE Límites de emisiones de contaminantes gaseosos y partículas
2011/65/UE	modificada Directiva Restricción del uso de determinadas sustancias peligrosas en equipos eléctricos y electrónicos
2006/42/CE	como diretiva de máquinas alteradas
2014/30/UE	como alteração da compatibilidade eletromagnética
2000/14/CE	como diretiva de ruído exterior alterada
Limites de emissão	de poluentes gasosos e de poluentes de partículas 2016/1628/REGULAMENTO da UE
2011/65/UE	como restrição diretiva alterada da utilização de certas substâncias perigosas em equipamentos elétricos e eletrônicos
Measured Sound Power Level	Guaranteed Sound Power Level
Le niveau de puissance acoustique mesuré	Le niveau de puissance acoustique garant
Zmierzony poziom mocy akustycznej	Gwarantowany poziom mocy akustycznej
Nivel de putere acustică măsurat	Nivel de putere acustică garantat
Nivel de potencia sonora medido	Nivel de potencia sonora garantizado
Nível de potência sonora medido	Nível de potência sonora garantido
109.7 dB(A)	114 dB(A)
Engine Model	
Modèle de moteur	
Model silnika	
Modelul motorului	
Modelo de motor	
Modelo de motor	
SH12080727 001 A1-A5	:
The notified body/ l'organisme notifié / Jednostka notyfikowana / Organismul notificat / Organismo notificado / Organismo notificado: Intertek Deutschland GmbH, Dipl.-Ing. Roland Heine, 0905	
Certificate registration number/ Numéro d'enregistrement du certificate/Number rejestracyjny certyfikatu /Nr.de inregistrare a certificatului / Numero de registro del certificado / Numero do certificado de registro: xxxxxxxxxxxx	
Conformity assessment procedures: Annex VI of the directive / Procédures d'évaluation de conformité : Annexe VI de la Directive/ Procedury oceny zgodności: Załącznik VI dyrektywy / Proceduri de evaluare a conformitatii: Anexa VI a directivei / Procedimientos de evaluación de la conformidad : Anexo VI de la directiva / Procedimentos de avaliação de conformidade: Anexo VI da diretiva	

In more detail...

References to the relevant harmonised standards used or references to the other technical specifications in relation to which conformity is declared:

Références des normes harmonisées pertinentes appliquées, y compris la date de celles-ci, ou des autres spécifications techniques, y compris la date de celles-ci, par rapport auxquelles la conformité est déclarée:

Odwolania do odnośnych norm zharmonizowanych, które zastosowano, wraz z datą normy, lub do innych specyfikacji technicznych, wraz z datą specyfikacji, w odniesieniu do których deklarowana jest zgodność:

Trimiteri la standardele armonizate relevante folosite, inclusiv data standardului, sau trimiteri la celelalte specificații tehnice, inclusiv data specificațiilor, în legătură cu care se declară conformitatea:

Referencias a las normas armonizadas pertinentes utilizadas, incluidas las fechas de las normas, o referencias a las otras especificaciones técnicas, incluidas las fechas de las especificaciones, respecto a las cuales se declara la conformidad:

Referências às normas harmonizadas aplicáveis utilizadas, incluindo a data da norma, ou às outras especificações técnicas, incluindo a data da especificação, em relação às quais é declarada a conformidade:

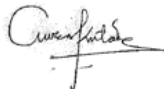
EN ISO 11681-1:2011

EN ISO 14982:2009

EN ISO 3744:1995

Authorised signatory and technical file holder/signataire et responsable de la documentation technique autorisé/
podmiot uprawniony do wystawienia i adres prezechowywania dokumentacji technicznej/semnatar autorizat și
deținător al dosarului tehnic/firmante autorizado y titular del expediente tecnico/ signatário autorizado e detentor
da ficha técnica

Kingfisher International Products B.V.,
Rapenburgerstraat 175E,
1011 VM Amsterdam,
The Netherlands



David Awe
Group Quality & Sustainability Director

: [date of issue format dd/mm/yyyy]



Manufacturer, Fabricant, Producent, Producător, Fabricante:

UK Manufacturer:

Kingfisher International Products Limited
3 Sheldon Square, London, W2 6PX
United Kingdom
www.kingfisher.com/products

EU Manufacturer:

Kingfisher International Products B.V.
Rapenburgerstraat 175E
1011 VM Amsterdam
The Netherlands
www.kingfisher.com/products

- | | | |
|-----------|--|---|
| EN | www.diy.com
www.screwfix.com
www.screwfix.ie | To view instruction manuals online, visit
www.kingfisher.com/products |
| FR | www.castorama.fr
www.bricodepot.fr | Pour consulter les manuels d'instructions en ligne,
rendez-vous sur le site www.kingfisher.com/products |
| PL | www.castorama.pl | Aby zapoznać się z instrukcją obsługi online, odwiedź
stronę www.kingfisher.com/products |
| ES | www.bricodepot.es | Para consultar los manuales de instrucciones en línea,
visite www.kingfisher.com/products |
| PT | www.bricodepot.pt | Para consultar manuais de instruções online, visite
www.kingfisher.com/products |
| RO | www.bricodepot.ro | Pentru a consulta manualele de instrucțiuni online, vizitați
www.kingfisher.com/products |
| TR | www.koctas.com.tr | Kullanım kılavuzuna internet üzerinden ulaşmak için
www.kingfisher.com/products adresini ziyaret edin |